



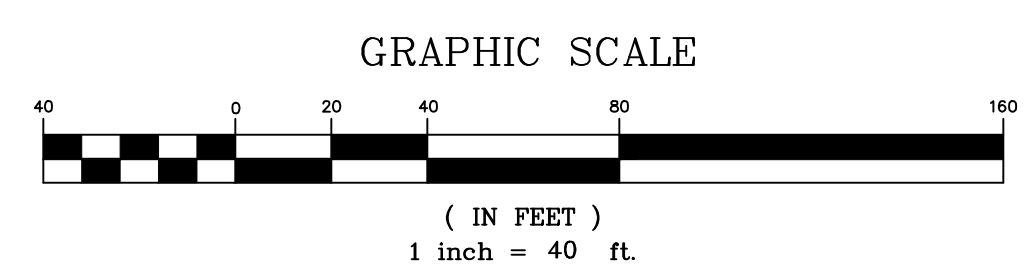
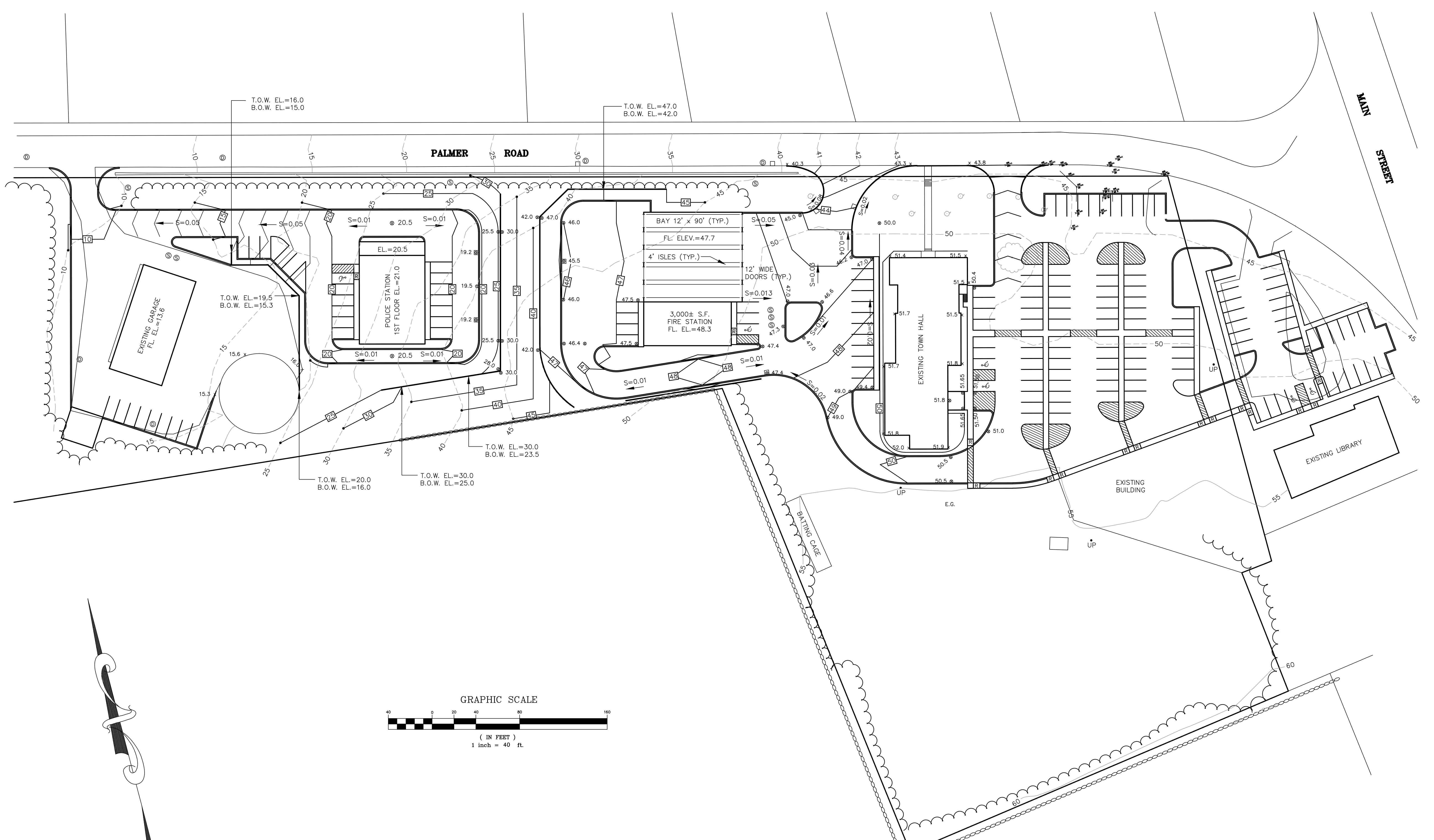
Plympton Public Safety  
Building Committee

# Meeting Summary - 11/4/15

- Meeting called to order at 6:02pm. Members present Nancy Butler, Jake Jacobson, Bob Karling, Art Morin, Colleen Thompson, Harry Weikel, and Jon Wilhelmsen. Advisors present: Warren Borsari, Pat Dillon, Jim Mulcahy and Dale Pleau. Residents present: Mark Russo, John Walker, Debbie Batson and Irving Butler.
- Collins engineering presented the revised conceptual layout for the campus including the new Police and Fire stations along with the existing Town House, Library, ball fields and Highway Barn. Police was moved further down the hill and would egress through the existing Highway barn driveway. Fire would be to the west of the Town House. There was discussion regarding whether there was room to flip the building with the equipment bays located away from the road and the office space by the road - thus reducing the height of the building from the road and limiting the imposing scale. JW noted the significant increase in parking - and while we need additional parking, it is possible that we have too much. Specifically noted were the spaces to the northeast of the Library. Debbie Batson, the library director, commented as well that these were probably not needed and would also interfere with trees recently planted. JW noted that if we were to proceed with these plans, we would also need to have a landscape architect review the plan to overlay a landscape plan that maximized the amount of green space and trees on the campus. There was also discussion regarding driveway entrances, though it was determined that the placement was intentional and minimized sightline issues.
- John Walker raised concerns about why we can't renovate the existing fire station. Issues regarding potential costs, including prevailing wage were raised. Also questions about where the Fire Department would reside during said renovation. AM suggested quonset huts like Marshfield has used, though where these could be located was not clear.
- AM brought up financing 540,000 in capital stabilization. Questioned whether \$ is sufficient to service project. Significant discussion on this point and the question was posed as to what the Committee has been doing for the past few months. Mark Russo noted that the prior incarnation of this Committee determined that funds were sufficient, provided we proceeded with a modular solution. JW also noted that the Committee had spent significant energy to get to this point - determining that a campus could work - and that the plan we reviewed tonight was the result of work over the last few months.
- Significant discussion regarding breaking up project - move ahead with the police station for 2016 and do the rest of the upper campus project in a future year.
- Further discussion regarding Center Street resulted in a motion to take Center Street off the table. NB, second BK - 6-0-0 (Note JJ had left the meeting prior to this motion and vote)
- Motion that the Committee through DP obtain a definitive engineering plan of the police station portion of the Palmer Road site. CT, second NB - 5-0-0 (Note: JJ and JW were no longer at the meeting).
- DP was asked to determine a timeline for getting this project, at least the Police Dept. portion, to Town Meeting. He was also asked to start getting some firmer information from the modular building companies for the Police station and to do some of the prep work for the RFPs.

Plympton Public Safety  
Building Committee

- FinCom will be asked to send a member to the November 18th meeting to help the committee understand the finances of this project - how long to finance, how much we can afford and what the financing options are.
- Next meeting is scheduled for November 18, 2015 @ 6pm.
- Meeting adjourned at 7:38 pm on the motion of AM second NB. Vote: 5-0-0



DRAWING TITLE CONCEPTUAL PARKING LAYOUT PLAN		SCALE: 1" = 40'
PROJECT ASSESSORS MAP 17 LOTS 2-16 & 2-17 PLYMPTON, MA		DATE: 10-29-2015
DESIGNED BY: DJK		DRAWN BY: DJK
CHECKED BY: GRC		APPROVED BY: GRC
<b>COLLINS CIVIL ENGINEERING GROUP, INC.</b> BRAINTREE - FALMOUTH - WEST BRIDGEWATER, MA CIVIL ENGINEERING - LAND SURVEY - L.S.P. SERVICES 225 SOUTH MAIN STREET, WEST BRIDGEWATER, MA 02379 TEL:508-580-2332 MOBILE: 617-347-1363 E-MAIL:GRCPE@AOL.COM		DRAWING NO. 15-066-172