

United States Department of the Interior
National Park Service

National Register of Historic Places
Continuation Sheet

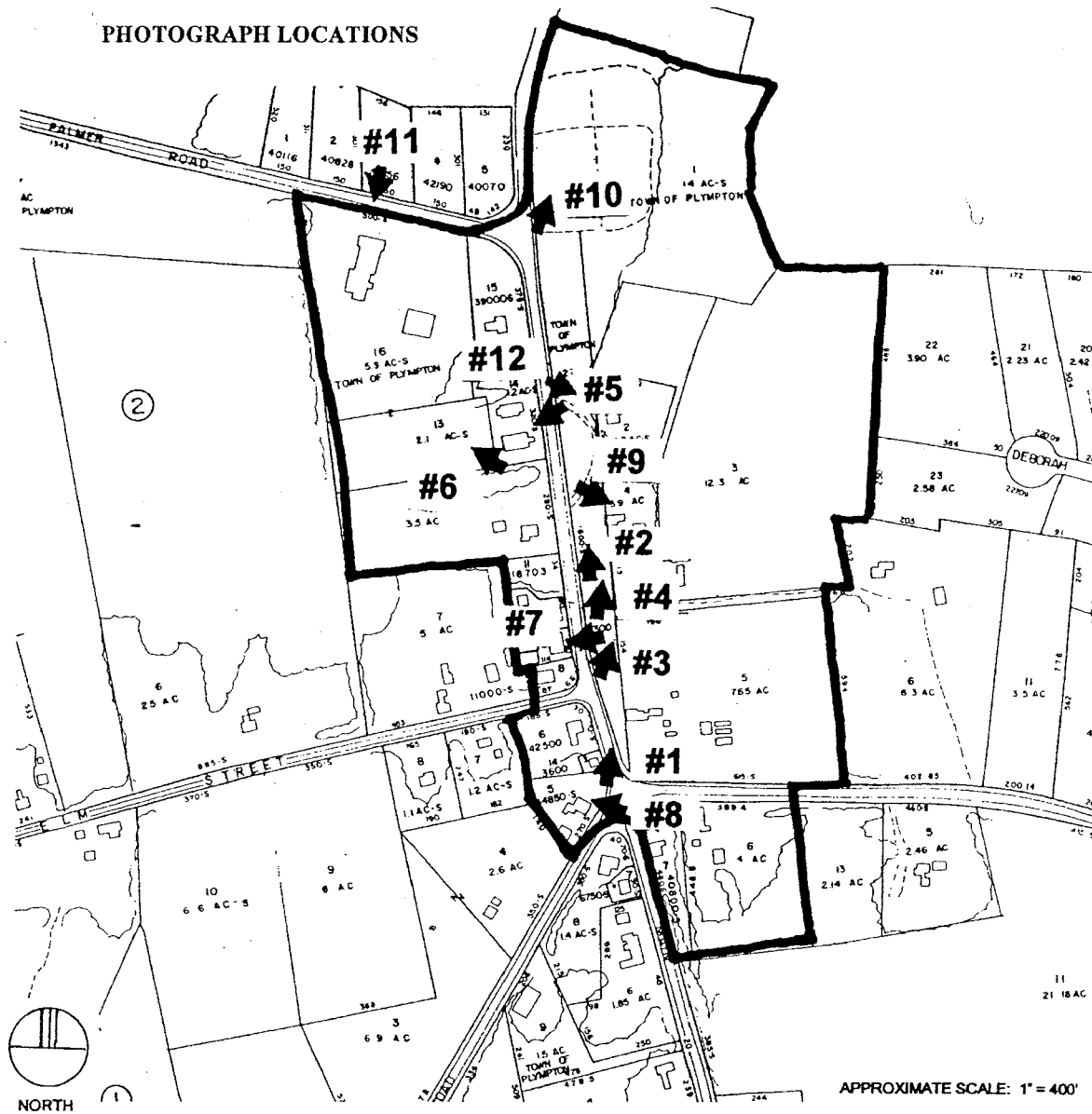
Section Number N/A Page N/A
(Additional Documentation)

Plympton Village Historic District
Plympton, Plymouth County, MA

LIST OF PHOTOGRAPHS

- #1 The southern entrance to the district, from the intersection of Main Street (Route 58) and Parsonage Road, looking north.
- #2 The Plympton Green from south of the Civil War Monument, looking north.
- #3 The circular gravel drive leading from Main Street to properties on the east side of the Green, looking northeast.
- #4 The eastern edge of the Green, lined with granite posts and Sugar Maple trees, looking north.
- #5 The First Congregational Church (254 Main Street), looking west.
- #6 The First Congregational Church Cemetery (254 Main Street), taken from the southwest corner of the Church, looking northwest.
- #7 The Randall Shoe Shop (268 Main Street), looking west.
- #8 The Joshua V. Peck House (2 Parsonage Road), looking northwest.
- #9 The George Sherman House (259 Main Street), looking southeast.
- #10 Hillcrest Cemetery, taken from the southern end looking north across the oldest section.
- #11 The Plympton Town House (Central School) taken from the south side of Palmer Road, looking south.
- #12 The Ezra Sampson House (255 Main Street) taken from the east side of Main Street, looking southeast.

Section Number N/A Page N/A
(Additional Documentation)



United States Department of the Interior
National Park Service

National Register of Historic Places Continuation Sheet

Section Number N/A Page N/A
(Additional Documentation)

Plympton Village Historic District
Plympton, Plymouth County, MA

