

TYPICAL UNIT SQUARE FOOTAGES:

1). BUILDING (COVERAGE)

1ST FLOOR GROSS SF W/ENTRY STOOP/DECK/BULKHEAD/GARAGE = 2100 SF
 DECK = 180 S.F.
 BULKHEAD = 38 S.F.
 ENTRY STOOP = 35 S.F.
 GARAGE = 480 S.F.

2). FLOOR AREA (GROSS)

1ST FLOOR GROSS WITH GARAGE = 1847 S.F.
 1ST FLOOR GROSS WITHOUT GARAGE = 1367 S.F.
 2ND FLOOR GROSS = 1055 S.F.
 TOTAL GROSS FLOOR AREA WITH GARAGE = 2902 S.F.
 TOTAL GROSS FLOOR AREA WITHOUT GARAGE = 2422 S.F.

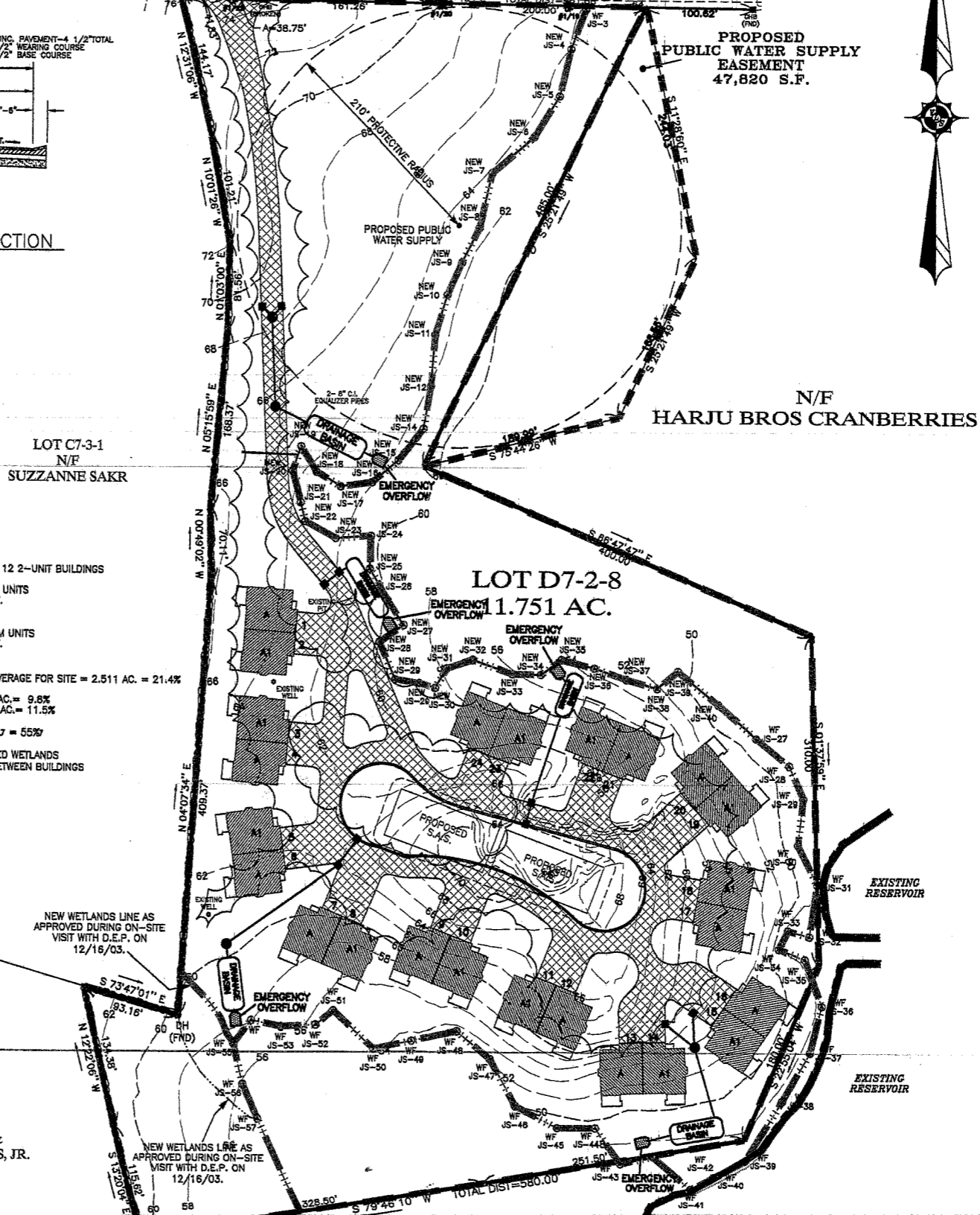
LEGEND

— PROPERTY LINE

NOTES:

- UNIT BREAKDOWN FOR 12 2-UNIT BUILDINGS
 12 TYPE A 2 BEDROOM UNITS
 MASTER BR=225 S.F.
 BR # 2 =256 S.F.
 12 TYPE A1 2 BEDROOM UNITS
 MASTER BR=225 S.F.
 BR#2 =256 S.F.
- TOTAL IMPERVIOUS COVERAGE FOR SITE = 2.511 AC. = 21.4%
 BUILDINGS = 1.157 AC. = 9.8%
 PAVEMENT = 1.354 AC. = 11.5%
- OPEN SPACE = 6.5 AC. = 55%
- 20' BUFFER TO FLAGGED WETLANDS
 20' MIN SEPARATION BETWEEN BUILDINGS

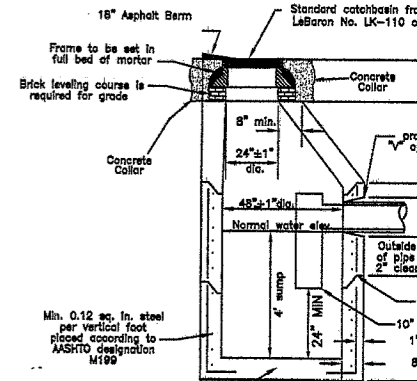
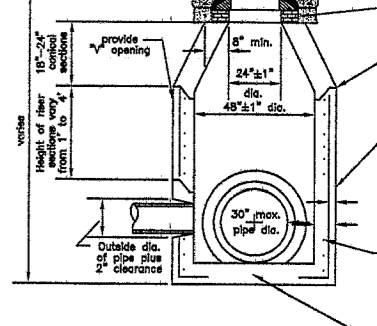
LOT C7-3-6
 N/F
 LORRAINE &
 CHARLES BURNS, JR.



PROPOSED
 PUBLIC WATER SUPPLY
 EASEMENT
 47,820 S.F.

N/F
 HARJU BROS CRANBERRIES

LOT D7-2-8
 1.751 AC.



PRECAST CONCRETE UNIT
 (NOT TO SCALE)

STUDY PLAN OF CRANBERRY KNOLL
 A COMMUNITY FOR RESIDENTS
 OVER 55 YEARS OF AGE

in
PLYMPTON

Prepared for
CRANBERRY KNOLL

Scale: 1" = 60'

MAY